



est. 1991

FOUNDED IN SINGAPORE 1991

**Ed Poole** Managing Director, graduated in 1983 from Illinois Institute of Technology B.Arch [Honors]. He is a member of the Chicago Chapter of the American Institute of Architects, a Chartered architect in Australia : New South Wales Chapter, and an Associate Member of the Singapore Institute of Architects. Residing 24 years in Singapore, he holds PR status. Ed was born in 1960 - the year of the rat [metal]

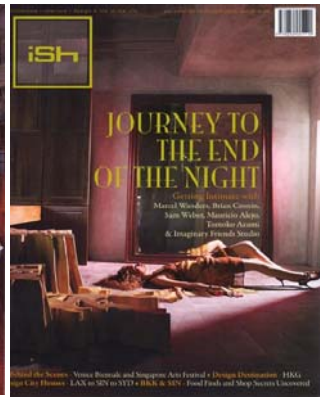
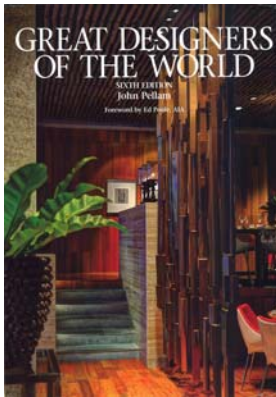
Biographical data appears in the following publications:

**Barons Who's Who in Interior Design** 1995 - 2013

**Marquis Who's Who in the World** 1999 - 2013

All current staff hold degrees in Architecture, Interior Design, Fine Arts or Multi Media.

Projects have been completed in the **USA, UK, Germany, Australia, Singapore, Malaysia** [Kuala Lumpur], **Thailand** [Phuket + Langkawi], **Indonesia** [Java, Bali + Medan] **Hong Kong, UAE** [Dubai + Abu Dhabi], **Maldives** [Ari Atoll + Baa Atoll], **India** [Chennai + New Delhi + Mumbai + Hyderabad + Kolkata + Goa], + Ulaanbaatar **Mongolia**.





Our work has been featured in the following.....

**International publications include :**

Great Designers of The World Sixth Edition cover  
 Bali by Design  
 Asian Bar and Restaurant Design  
 Cool Hotels Best of Asia | cover  
 Hotelier International  
 The World's Greatest Hotels, Resorts and Spas 3rd ed.  
 Wallpaper [March 2008 ]  
 The Financial Times | Feb 9th 2008  
 New Spas & Resorts | HarperCollins 2007 | W Retreat  
 Condé Nast Traveler 09.2007  
 Asian Bar and Restaurant Design 2007  
 Travel+ Leisure March 2007 [awards] w Retreat  
 GQ Berlin  
 Harper's Bazaar : KL  
 Posh Nosh, Cheap Eats + Star Bars Dubai  
 Hip Entertaining bars + restaurants 2006  
 Groovy Homes : Sexy + Delicious Living Spaces 2005  
 Going Places : Inflight Magazine of Malaysian Airlines  
 AstroGuide Dec 2005 : Kuala Lumpur [cover story]  
 AstroGuide July 2005 : Kuala Lumpur [cover story]  
 Wallpaper\* 10.2004  
 Time Out Dubai  
 Interiors International, USA  
 New Chinese Cuisine  
 100 Designers' Favorite Rooms, USA  
 Australian Commercial Design Trends, Australia.  
 World Architecture, UK  
 Zenith : Issue No.2  
 East: Launch issue  
 Hinge [Hong Kong]  
 Time Magazine, Asia edition  
 Interiors : USA  
 Commercial Design Trends, USA  
 Home and Apartment Trends, USA  
 Cream. International  
 Interior, vol 128 : Taiwan  
 CNN Traveler  
 Middle East Hotelier  
 Architecture Asia - June 2005  
 The Star, KL  
 Nox [Madrid] Primavera Verano 2005  
 Spa Asia - Nov|Dec 2006

**Singapore publications :**

VIP Magazine Singapore  
 Form [Feb 2008] cover story  
 ISH : Fragments from an urbanscape June 2007 cover  
 IS Magazine  
 The Straits Times  
 The Business Times  
 Where Singapore  
 The New Paper  
 Asian Hospitality Magazine | numerous issues  
 8 Days Magazine  
 ID Singapore  
 Interiors Quarterly  
 Singapore Commercial Design Trends  
 Singapore Architect  
 Apartment Living  
 SPACE Magazine  
 Wine and Dine  
 Men's Folio  
 My Home  
 Female  
 Her World  
 Cita Bella  
 Go  
 Elle  
 Expression  
 Mercedes  
 ISH: fragments from an urbanscape  
 China Mail  
 The Expat Singapore  
 The Peak  
 Home & Decor  
 D + A  
 Bathroom Today  
 Style

**Television Interviews include:**

AM Singapore  
 D.sign: Premier 12, Singapore

**Television Features include:**

Arts Central : [program aired December 2000]  
 Projects featured : Cafe Iguana, Front Page, Club Eden  
 Channel News Asia : Bobby's [December 2006]

**Television Features denied:**

thanks for the offers  
 At Home with.....[2000], Arts Central  
 Art Nation - feature : 3rd June 2002  
 Amazing Homes TCN Channel 9, NSW Australia